

JANUARY

Actions, Animals and Everyday Items

nēhiyawēwin

Cree Language

This booklet belongs to:

name

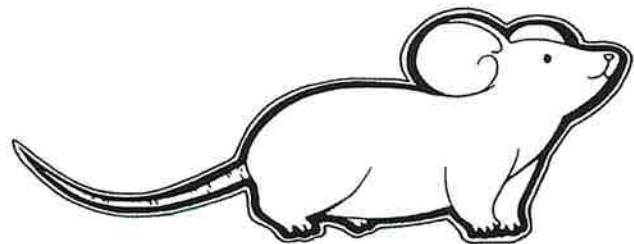


Sivvin Sivvin 2010

Directions: Draw a picture of a type of food you would see next to the mouse. Please circle what the mouse is doing.

Circle one word:

Is the mouse **apisimōsos** (ah-piy-siy-moo-sush)
or is the mouse **wāpakosīs** (waah-puck-oh-sees)



Draw a picture of Deer in an open field. The Deer is playing with other animals. How would you think they play? Were they happy or sad? Draw the pictures of the animals, make sure one is **apisimōsos** (ah-piy-siy-moo-sush)

apisimōsos

(ah-piy-siy-moo-sush)

Directions: If you ohtēna (oh-tea-nah)? What are you doing? Can you identify different things that you can ohtēna. Please draw the different items/things that can ohtēna.

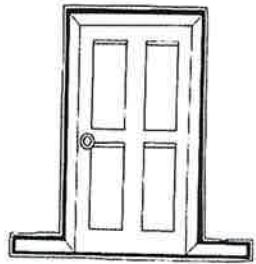
ohtēna

oh-tea-nah

Directions: Match the cree word with the picture. Say the word aloud as you are matching them.



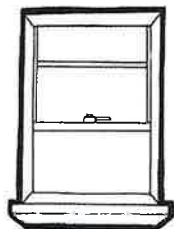
iskwāhtēm
is-kwaah-team



nīmihito
knee-me-two



wāsēnamawin
waah-see-nah-mah-win



wayawī
way-yah-we

Directions: Which of these pictures is grandmother, grandfather and close? Please write the English word above each of the pictures to identify your answers.



nōtokwēw
nuu-to-ghew



kiseyiniw
kissy-yeh-new



kipaha
kiy-pah-hah

How many members of your family have you seen this holiday? Circle the answer below.

peyak

mitahtat

nikotwāsik

nisto

niyānan

nīso

nēwo

tīpahkōp

kēkāmītahtat

ayinānew